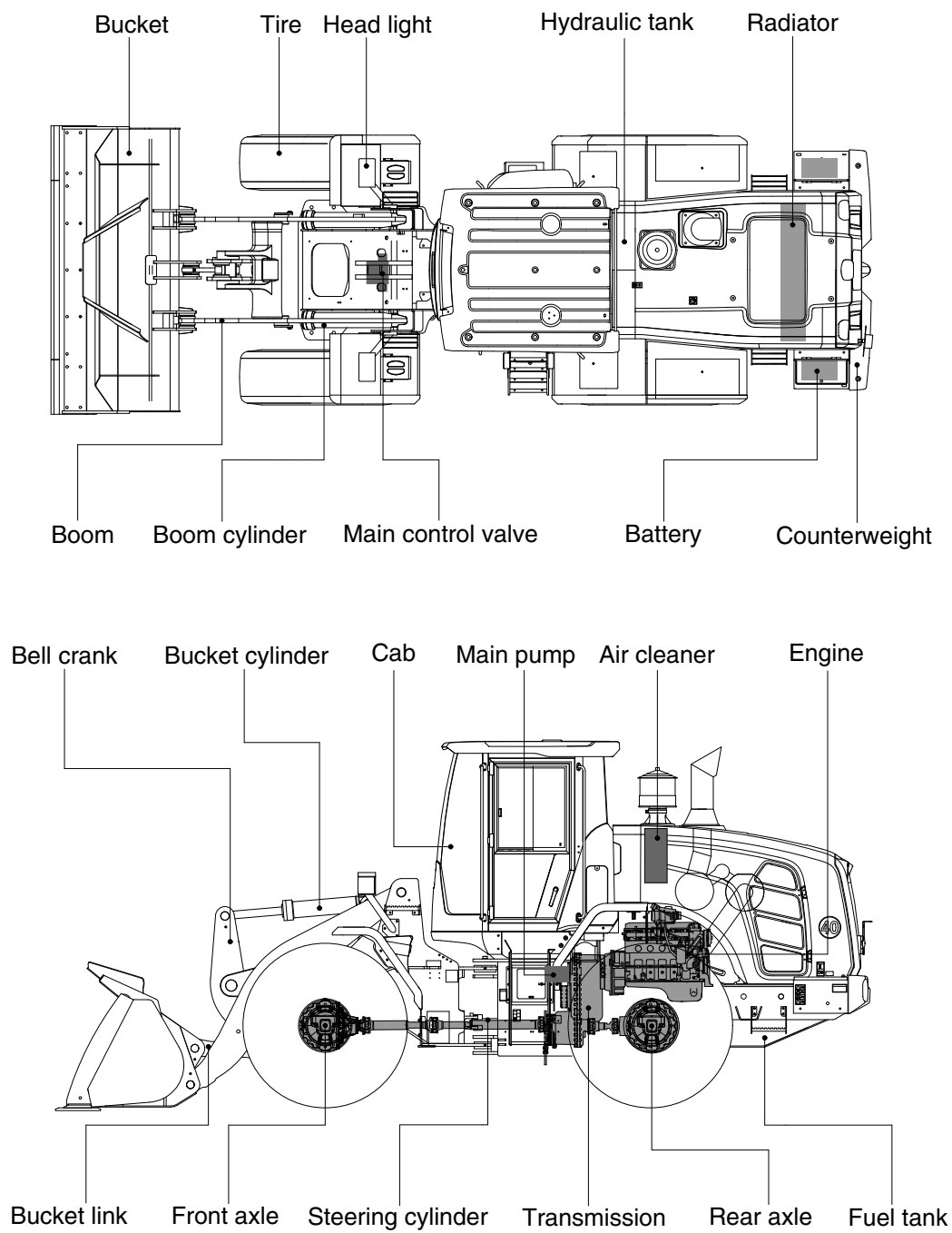


2. SPECIFICATIONS

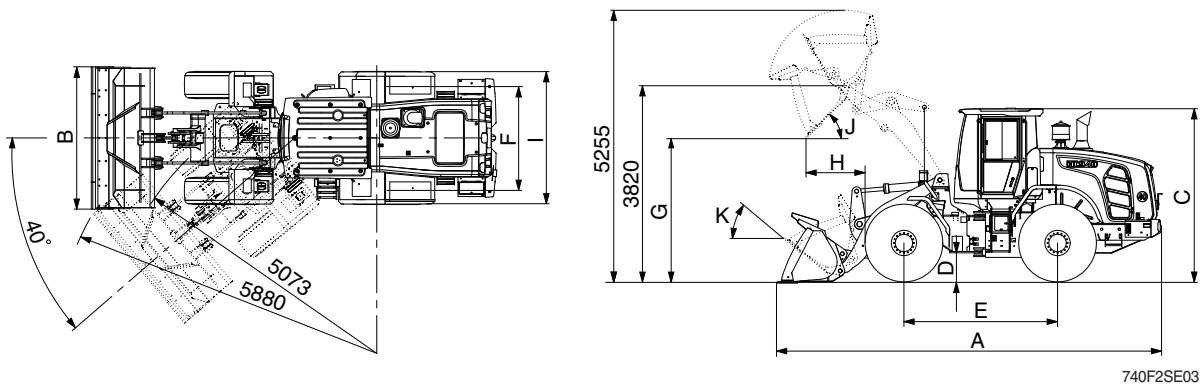
1. MAJOR COMPONENTS



740F2SE01

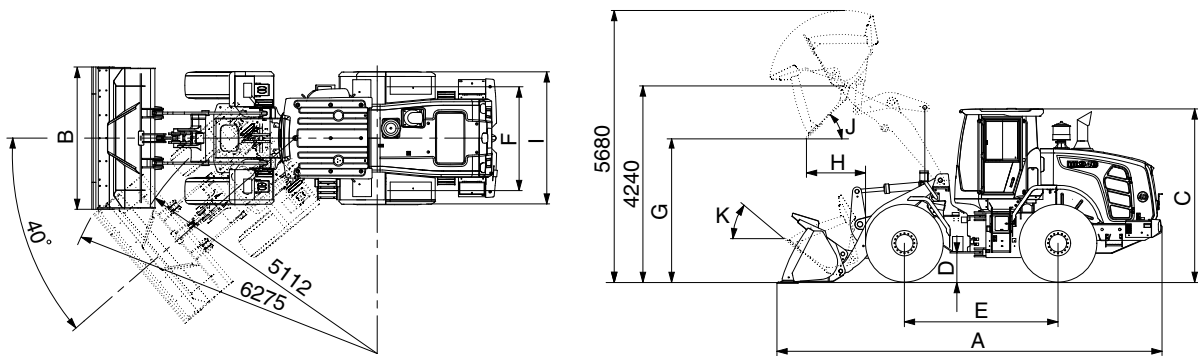
2. SPECIFICATIONS

1) WITH BOLT-ON CUTTING EDGE TYPE BUCKET (HL940)



Description			Unit	Specification
Operating weight			kg (lb)	13100 (28880)
Bucket capacity	Struck		m³ (yd³)	2.0 (2.6)
	Heaped			2.3 (3.0)
Overall length	A		mm (ft-in)	7430 (24' 5")
Overall width	B			2600 (8' 6")
Overall height	C			3300 (10' 10")
Ground clearance	D			417 (1' 4")
Wheelbase	E			2950 (9' 8")
Tread	F			1900 (6' 3")
Dump clearance at 45°	G			2785 (9' 2")
Dump reach (full lift)	H			1025 (3' 4")
Width over tires	I			2430 (8' 0")
Dump angle	J			degree (°)
Roll back angle (carry position)	K		47	
Cycle time	Lift (with load)		sec	5.5
	Dump (with load)			1.1
	Lower (empty)			3.0
Maximum travel speed			km/hr (mph)	40 (24.9)
Braking distance			m (ft-in)	13.3 (43' 8")
Minimum turning radius (center of outside tire)				5.07 (16' 8")
Gradeability			degree (°)	30
Breakout force			kg (lb)	11250 (24800)
Travel speed	Forward	First gear	km/hr (mph)	6.9 (4.3)
		Second gear		12.7 (7.9)
		Third gear		24.9 (15.5)
		Fourth gear		40 (24.9)
	Reverse	First gear		7.3 (4.5)
		Second gear		13.4 (8.3)
		Third gear		26.1 (16.2)

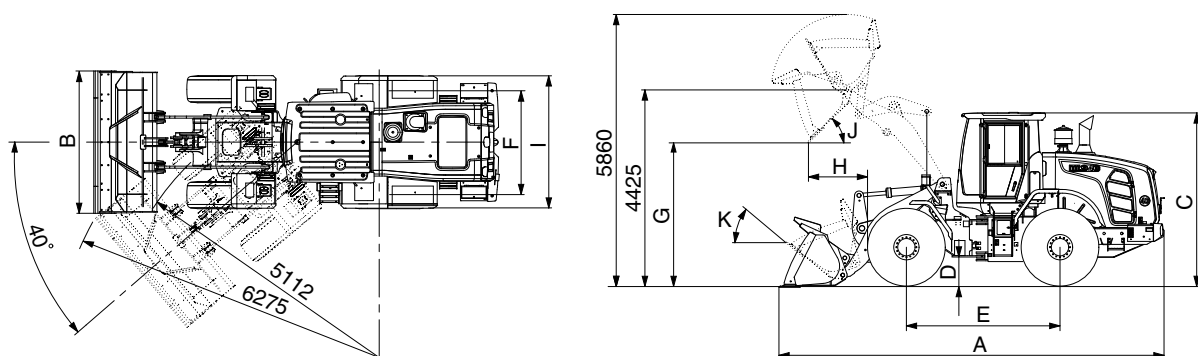
WITH BOLT-ON CUTTING EDGE TYPE BUCKET (HL940 XT, ~#0366)



740F2SE03-1

Description			Unit	Specification
Operating weight			kg (lb)	13400 (29540)
Bucket capacity	Struck		m³ (yd³)	2.0 (2.6)
	Heaped			2.3 (3.0)
Overall length	A		mm (ft-in)	7895 (25' 11")
Overall width	B			2600 (8' 6")
Overall height	C			3300 (10' 10")
Ground clearance	D			417 (1' 4")
Wheelbase	E			2950 (9' 8")
Tread	F			1900 (6' 3")
Dump clearance at 45°	G			3210 (10' 6")
Dump reach (full lift)	H			1020 (3' 4")
Width over tires	I			2430 (8' 0")
Dump angle	J		degree (°)	47
Roll back angle (carry position)	K			49
Cycle time	Lift (with load)		sec	5.5
	Dump (with load)			1.1
	Lower (empty)			3.0
Maximum travel speed			km/hr (mph)	40 (24.9)
Braking distance			m (ft-in)	13.3 (43' 8")
Minimum turning radius (center of outside tire)				5.11 (16' 9")
Gradeability			degree (°)	30
Breakout force			kg (lb)	11100 (24470)
Travel speed	Forward	First gear	km/hr (mph)	6.9 (4.3)
		Second gear		12.7 (7.9)
		Third gear		24.9 (15.5)
		Fourth gear		40 (24.9)
	Reverse	First gear		7.3 (4.5)
		Second gear		13.4 (8.3)
		Third gear		26.1 (16.2)

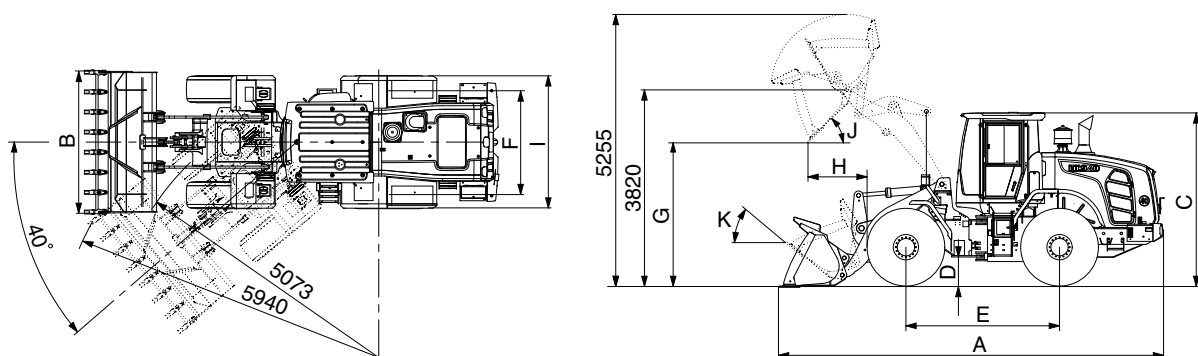
WITH BOLT-ON CUTTING EDGE TYPE BUCKET (HL940 XT, #0367~)



740F2SE03-2

Description			Unit	Specification
Operating weight			kg (lb)	13490 (29740)
Bucket capacity	Struck		m³ (yd³)	2.0 (2.6)
	Heaped			2.3 (3.0)
Overall length	A		mm (ft-in)	8080 (26' 8")
Overall width	B			2600 (8' 6")
Overall height	C			3300 (10' 10")
Ground clearance	D			417 (1' 4")
Wheelbase	E			2950 (9' 8")
Tread	F			1900 (6' 3")
Dump clearance at 45°	G			3390 (11' 1")
Dump reach (full lift)	H			1010 (3' 3")
Width over tires	I			2430 (8' 0")
Dump angle	J			degree (°)
Roll back angle (carry position)	K		50	
Cycle time	Lift (with load)		sec	5.5
	Dump (with load)			1.1
	Lower (empty)			3.0
Maximum travel speed			km/hr (mph)	40 (24.9)
Braking distance			m (ft-in)	13.3 (43' 8")
Minimum turning radius (center of outside tire)				5.11 (16' 9")
Gradeability			degree (°)	30
Breakout force			kg (lb)	10920 (24075)
Travel speed	Forward	First gear	km/hr (mph)	6.9 (4.3)
		Second gear		12.7 (7.9)
		Third gear		24.9 (15.5)
		Fourth gear		40 (24.9)
	Reverse	First gear		7.3 (4.5)
		Second gear		13.4 (8.3)
		Third gear		26.1 (16.2)

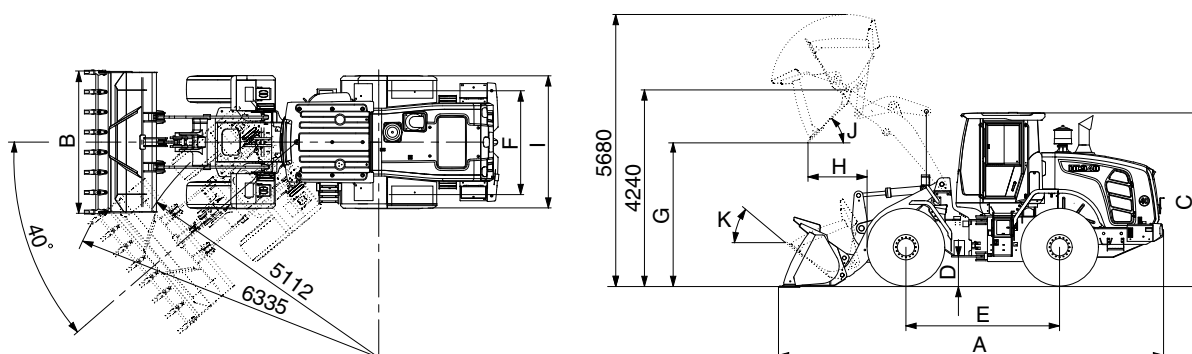
2) WITH TOOTH TYPE BUCKET (HL940)



740F2SE02

Description			Unit	Specification
Operating weight			kg (lb)	13030 (28725)
Bucket capacity	Struck		m³ (yd³)	1.9 (2.5)
	Heaped			2.2 (2.9)
Overall length	A		mm (ft-in)	7530 (24' 8")
Overall width	B			2650 (8' 8")
Overall height	C			3300 (10' 10")
Ground clearance	D			417 (1' 4")
Wheelbase	E			2950 (9' 8")
Tread	F			1900 (6' 3")
Dump clearance at 45°	G			2695 (8' 10")
Dump reach (full lift)	H			1115 (3' 8")
Width over tires	I			2430 (8' 0")
Dump angle	J			degree (°)
Roll back angle (carry position)	K		47	
Cycle time	Lift (with load)		sec	5.5
	Dump (with load)			1.1
	Lower (empty)			3.0
Maximum travel speed			km/hr (mph)	40 (24.9)
Braking distance			m (ft-in)	13.3 (43' 8")
Minimum turning radius (center of outside tire)				5.07 (16' 8")
Gradeability			degree (°)	30
Breakout force			kg (lb)	12070 (26610)
Travel speed	Forward	First gear	km/hr (mph)	6.9 (4.3)
		Second gear		12.7 (7.9)
		Third gear		24.9 (15.5)
		Fourth gear		40 (24.9)
	Reverse	First gear		7.3 (4.5)
		Second gear		13.4 (8.3)
		Third gear		26.1 (16.2)

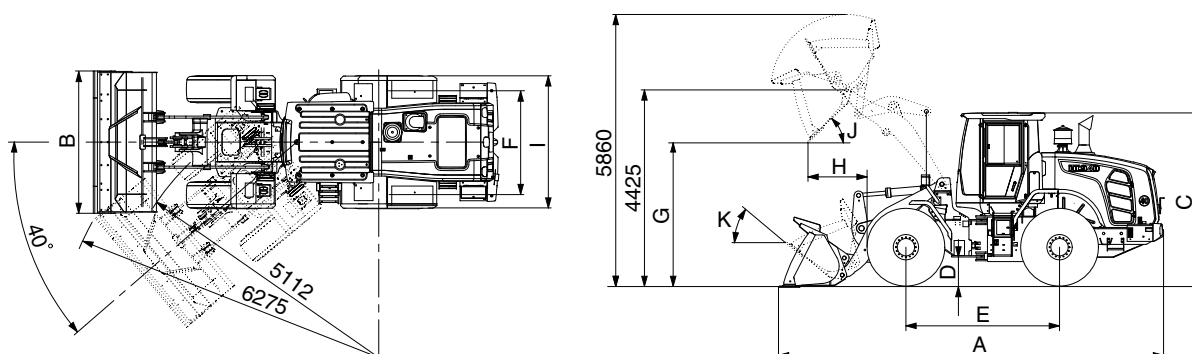
WITH TOOTH TYPE BUCKET (HL940 XT, ~#0366)



740F2SE02-1

Description			Unit	Specification
Operating weight			kg (lb)	13330 (29390)
Bucket capacity	Struck		m³ (yd³)	1.9 (2.5)
	Heaped			2.2 (2.9)
Overall length	A		mm (ft-in)	8200 (26' 11")
Overall width	B			2650 (8' 8")
Overall height	C			3300 (10' 10")
Ground clearance	D			417 (1' 4")
Wheelbase	E			2950 (9' 8")
Tread	F			1900 (6' 3")
Dump clearance at 45°	G			3120 (10' 3")
Dump reach (full lift)	H			1080 (3' 7")
Width over tires	I			2430 (8' 0")
Dump angle	J			degree (°)
Roll back angle (carry position)	K		49	
Cycle time	Lift (with load)		sec	5.5
	Dump (with load)			1.1
	Lower (empty)			3.0
Maximum travel speed			km/hr (mph)	40 (24.9)
Braking distance			m (ft-in)	13.3 (43' 8")
Minimum turning radius (center of outside tire)				5.11 (16' 9")
Gradeability			degree (°)	30
Breakout force			kg (lb)	11915 (26270)
Travel speed	Forward	First gear	km/hr (mph)	6.9 (4.3)
		Second gear		12.7 (7.9)
		Third gear		24.9 (15.5)
		Fourth gear		40 (24.9)
	Reverse	First gear		7.3 (4.5)
		Second gear		13.4 (8.3)
		Third gear		26.1 (16.2)

WITH TOOTH TYPE BUCKET (HL940 XT, #0367~)



740F2SE02-2

Description			Unit	Specification
Operating weight			kg (lb)	13410 (29564)
Bucket capacity	Struck		m³ (yd³)	1.9 (2.5)
	Heaped			2.2 (2.9)
Overall length	A		mm (ft-in)	8200 (26' 11")
Overall width	B			2650 (8' 8")
Overall height	C			3300 (10' 10")
Ground clearance	D			417 (1' 4")
Wheelbase	E			2950 (9' 8")
Tread	F			1900 (6' 3")
Dump clearance at 45°	G			3305 (10' 10")
Dump reach (full lift)	H			1080 (3' 7")
Width over tires	I			2430 (8' 0")
Dump angle	J			degree (°)
Roll back angle (carry position)	K		50	
Cycle time	Lift (with load)		sec	5.5
	Dump (with load)			1.1
	Lower (empty)			3.0
Maximum travel speed			km/hr (mph)	40 (24.9)
Braking distance			m (ft-in)	13.3 (43' 8")
Minimum turning radius (center of outside tire)				5.11 (16' 9")
Gradeability			degree (°)	30
Breakout force			kg (lb)	11720 (25840)
Travel speed	Forward	First gear	km/hr (mph)	6.9 (4.3)
		Second gear		12.7 (7.9)
		Third gear		24.9 (15.5)
		Fourth gear		40 (24.9)
	Reverse	First gear		7.3 (4.5)
		Second gear		13.4 (8.3)
		Third gear		26.1 (16.2)

3. WEIGHT

Item		kg	lb
Front frame assembly		946	2090
Rear frame assembly		1267	2790
Front fender (LH & RH)		32	71
Counterweight	HL940 (LH/RH)	150/150	331/331
	HL940XT (LH/RH)	250/250	551/551
Cab assembly		980	2160
Engine assembly		520	1150
Transmission assembly		430	948
Drive shaft (front)		15	33
Drive shaft (center)		22	49
Drive shaft (rear)		13	29
Front axle (include differential)		750	1650
Rear axle (include differential)		760	1680
Tire (20.5 R25, ★L3)		238	525
Hydraulic tank assembly		138	304
Fuel tank assembly		291	642
Main pump assembly		28	62
Fan & brake pump assembly		12	26
Main control valve (2/3 spool)		34/41	75/90
Boom assembly	HL940	713	1570
	HL940XT (~#0366)	813	1790
	HL940XT (#0377~)	880	1940
Bell crank assembly		224	495
Quick coupler assembly		400	882
Bucket link		36	79
2.3 m³ bucket, with bolt on cutting edge		1108	2440
Boom cylinder assembly		106	234
Bucket cylinder assembly		111	245
Steering cylinder assembly		16	35
Seat		60	132
Battery		30	66

4. SPECIFICATION FOR MAJOR COMPONENTS

1) ENGINE

Item	Specification
Model	Cummins QSB6.7
Type	4-cycle turbocharged and charge air-cooled diesel engine
Cooling method	Water cooling
Number of cylinders and arrangement	6 cylinders, in-line
Firing order	1-5-3-6-2-4
Combustion chamber type	Direct injection type
Cylinder bore × stroke	107×124 mm (4.2"×4.9")
Piston displacement	6700 cc (408 cu in)
Compression ratio	17.3 : 1
Rated horse power (Gross)	158 hp at 2100 rpm
Maximum torque at 1400 rpm	86 kgf·m (622 lbf·ft)
Engine oil quantity	18ℓ (4.8 U.S. gal)
Wet weight	580 kg (1279 lb)
High idling speed	2230 ± 50 rpm
Low idling speed	800 ± 25 rpm
Rated fuel consumption	224 g/kW·hr
Starting motor	Nippondenso PA90L (24V-7.8kW)
Alternator	Delco Remy 24SI (24V-95Amp)
Battery	2×12V×120Ah

2) MAIN PUMP

Item		Specification
Type		Variable piston pump
Capacity		74 cc/rev
Maximum operating pressure		280 kgf/cm ² (3980 psi)
Maximum operating speed		2230 rpm
Rated output flow		149ℓ/min

3) FAN AND BRAKE PUMP

Item		Specification	
		Fan	Brake
Type		Variable piston pump	
Capacity		28 cc/rev	
Maximum operating pressure		250 bar	150 bar
Maximum operating speed		2230 rpm	
Rated output flow		56ℓ/min (14.8 U.S.gpm)	

4) MAIN CONTROL VALVE

Item		Specification
Type		2 spool (mono block)
Operating method		Hydraulic pilot assist
Main relief valve set pressure		280 kgf/cm ² (3980 psi)
Overload relief valve set pressure		340 kgf/cm ² (4840 psi) / *300 kgf/cm ² (4270 psi)

* : Bucket dump

5) REMOTE CONTROL VALVE

Item		Specification
Type		Joystick (or with aux lever)
Control pressure	Minimum	3.7 kgf/cm ² (52.6 psi)
	Maximum	30 kgf/cm ² (427 psi)

6) CYLINDER

Item		Specification
Boom cylinder	Bore dia × Rod dia × Stroke	Ø110 × Ø65 × 738 mm
Bucket cylinder	Bore dia × Rod dia × Stroke	Ø125 × Ø70 × 505 mm
Steering cylinder	Bore dia × Rod dia × Stroke	Ø 65 × Ø40 × 429 mm

7) DYNAMIC POWER TRANSMISSION DEVICES

Item		Specification
Torque converter	Model	ZF 4WG160
	Type	Single-stage, single-phase
	Ratio	2.30 : 1
Transmission	Type	Full-automatic power shift
	Gear shift	Forward fourth gear, reverse third gear
	Control	Electrical single lever type, kick-down system
	Pump rated flow	85ℓ/min (22.5 U.S.gpm) at 2000 rpm
Axle	Drive devices	4-wheel drive
	Front	Front fixed location
	Rear	Oscillation $\pm 12^\circ$ of center pin-loaded
Wheels	Tires	20.5 R25, ★(L3)
Brakes	Travel	Four-wheel, wet-disc type, full hydraulic
	Parking	Spring applied, hydraulic released brake on transmission
Steering	Type	Full hydraulic, articulated
	Steering angle	40° to both right and left angle, respectively